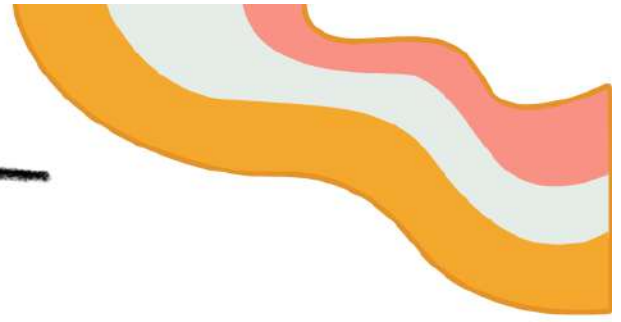


# CREATIVE EVENTS

---



## \* Face Painting:

“Let’s make it expressive.”

### **RULES AND REGULATIONS:**

- **Theme:** Pop Culture
- Each college can have two teams at maximum with 2 members each
- **Time Allotted:** 1 hour
- Participants must bring their own face paints, brushes, sponges, and accessories.
- Only skin-safe, non-toxic face paints should be used.
- Use of permanent colors, harmful chemicals, or sprays is strictly prohibited.
- Participants may also use light decorative elements (glitter, stones, small props)
- The participants must paint their team members' faces according to the theme.

---

**Pemasang Tamang: 8016406485**

---